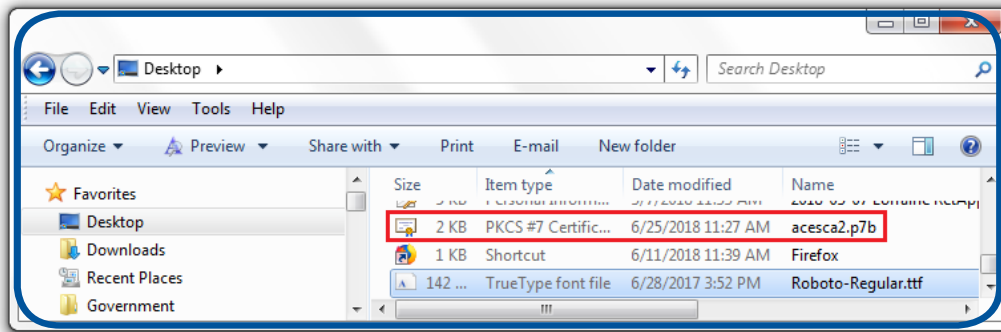


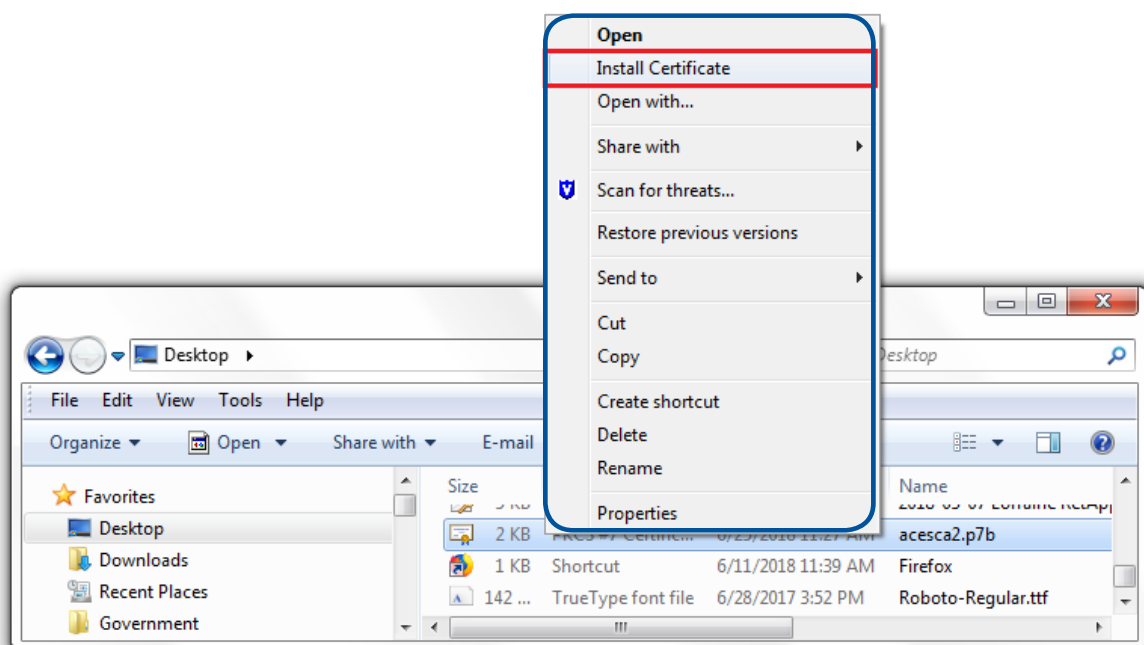
## ACES SSL CA Root Chain Certificate Download Instructions

Before you can use your digital certificate; you must install the Root Certificate Chain in your browser.

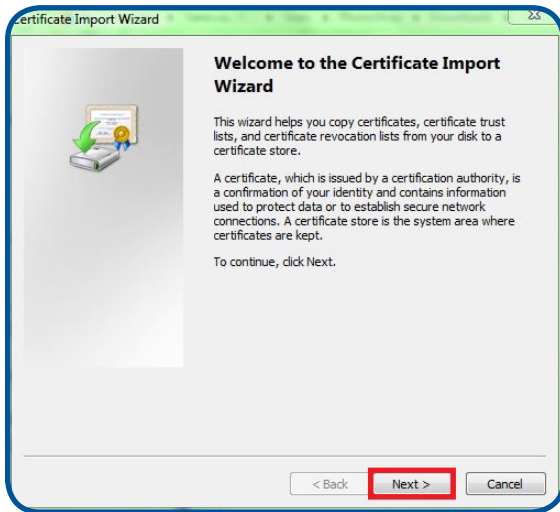
1. Click on **ACES SSL CA Certificate Download** and save to your Windows desktop.
2. Locate the downloaded file on your Windows desktop. The icon looks like a paper certificate and the file has a .p7b extension, which you can see if you hover over the file.  
(Note: You may have to minimize or close other programs to get to the Windows desktop.)



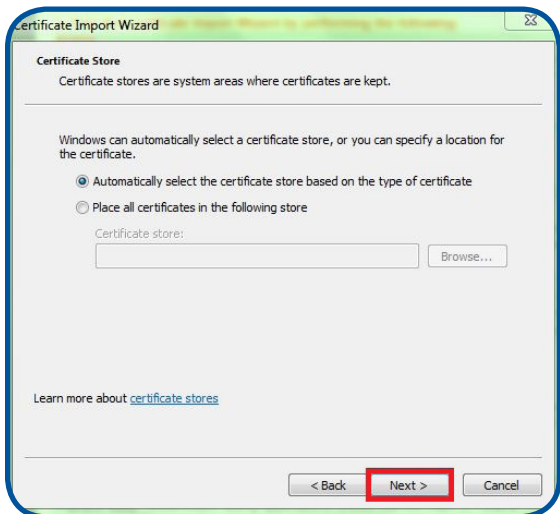
3. Right-click the file.
4. A pop-up menu will appear. Click on **“Install Certificate”**.  
The Certificate Import Wizard will appear.



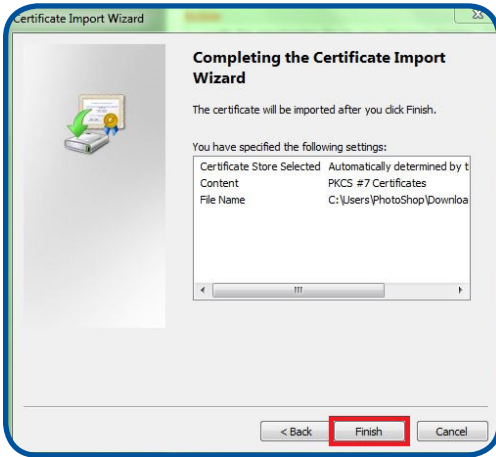
5. Click **“Next”**.



6. By default, the button is checked for: **“Automatically select the certificate store...”**  
Keep the default selection. Click **“Next”**.



7. Click **“Finish”**.



8. If prompted: “Do you want to ADD the following certificate to the Root Store?” Click **“Yes”**.  
You will receive a message saying: “The import was successful”.  
Click **“OK”** to close the notification window.

